

SOUND CHECK: THE INTERACTION



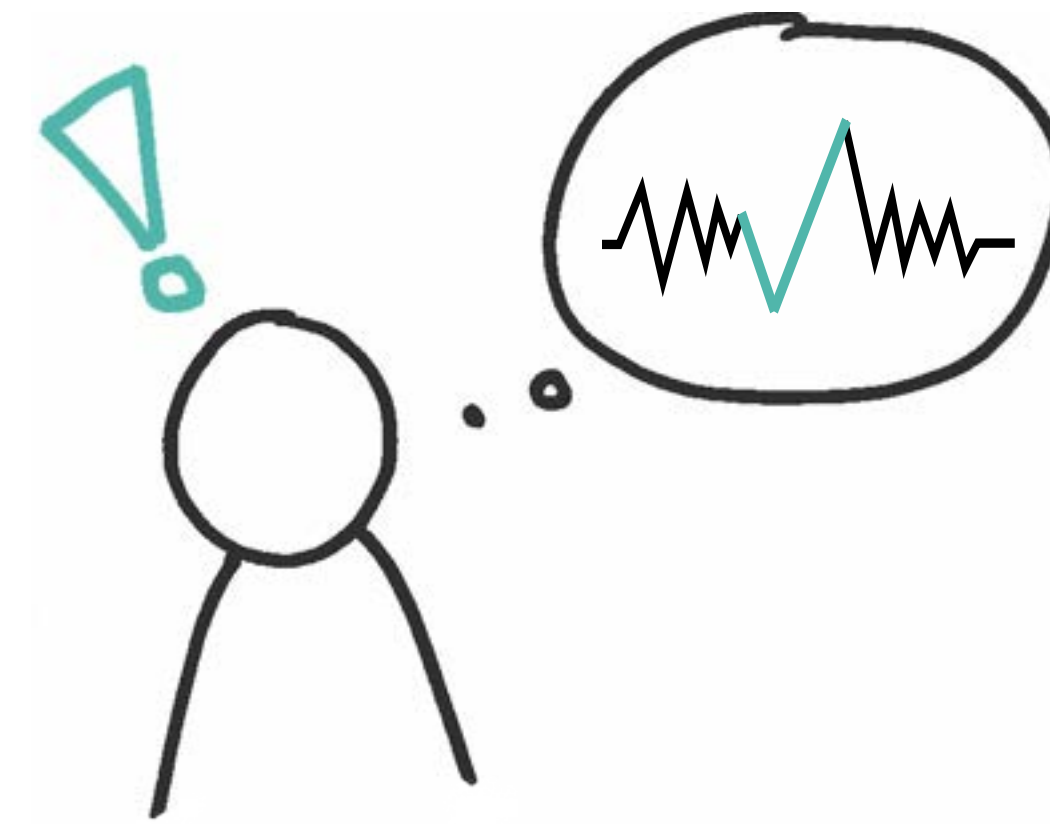
MEET FRIDA: Frida is a sexual assault/domestic violence advocate. Specifically, she is a hotline volunteer who takes calls while she is out and about, because her organization's hotline forwards to her phone.



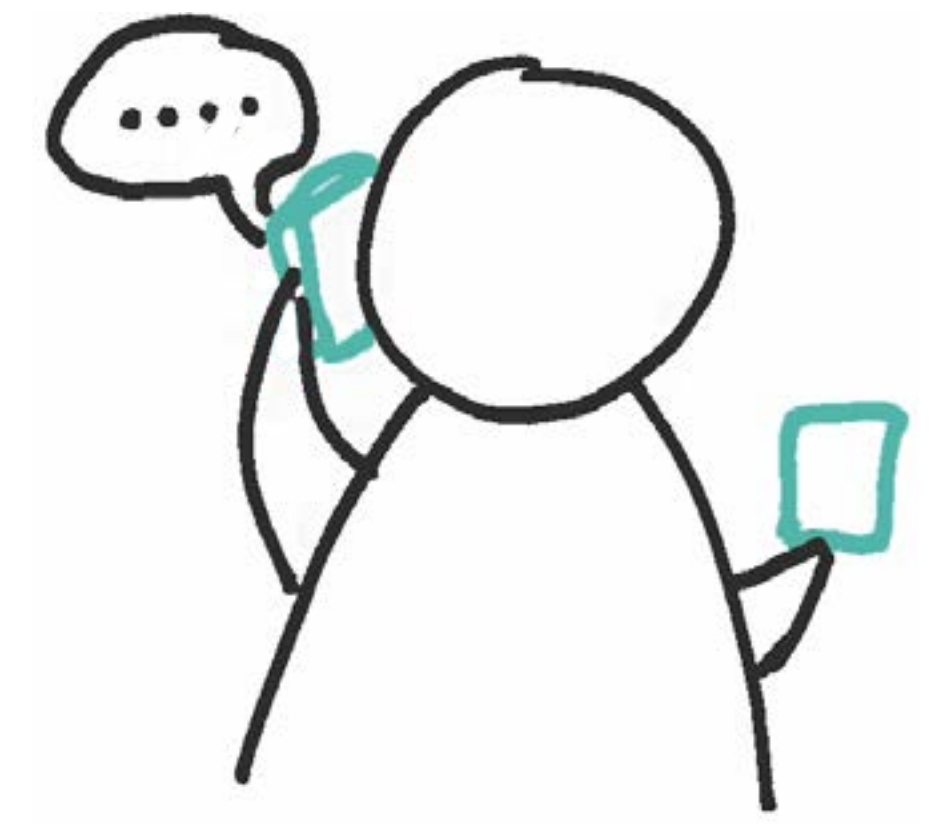
For Frida, finding a confidential space to **guarantee survivor privacy** is very important to her.



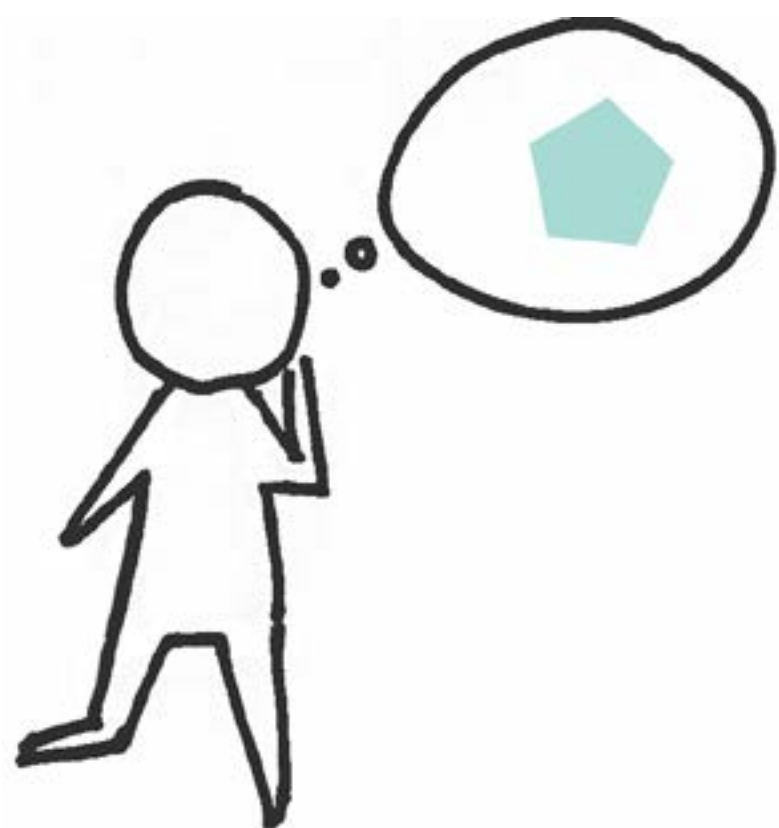
Frida receives a call while in a large crowd and **panics** because she **doesn't know** where to take it.



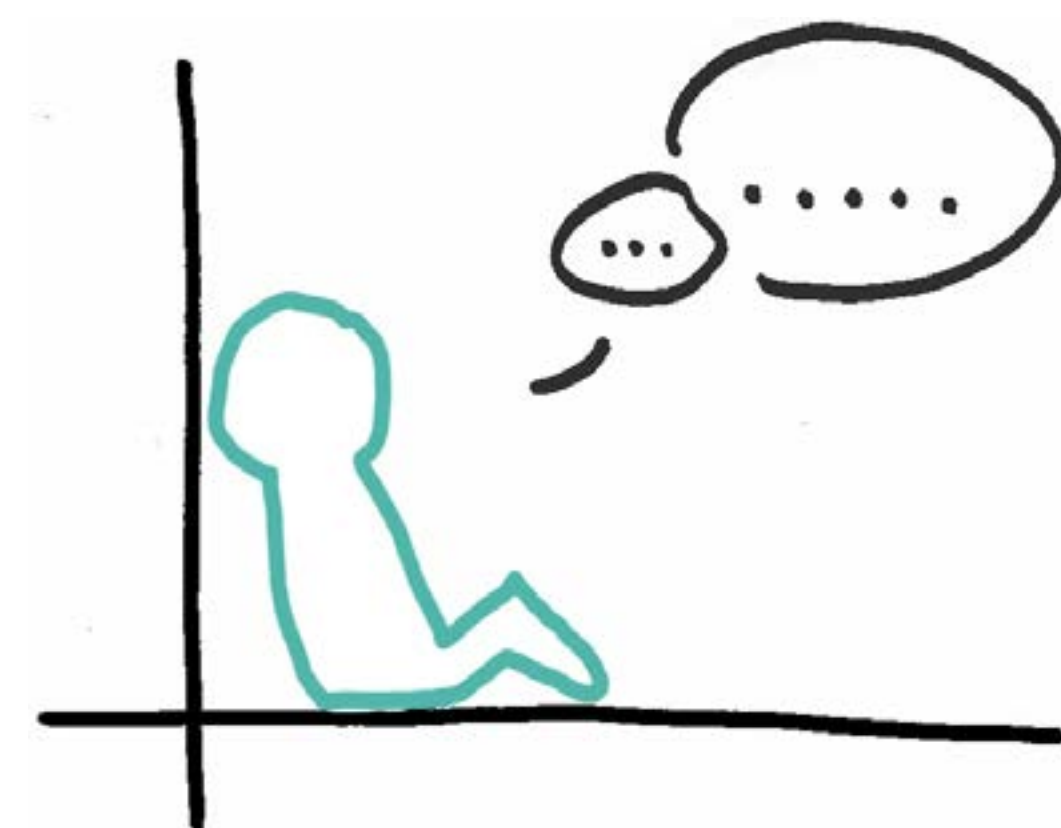
She then remembers she has **Sound Check!**



While answering the call, Frida uses **Sound Check** for **near-by location suggestions**.



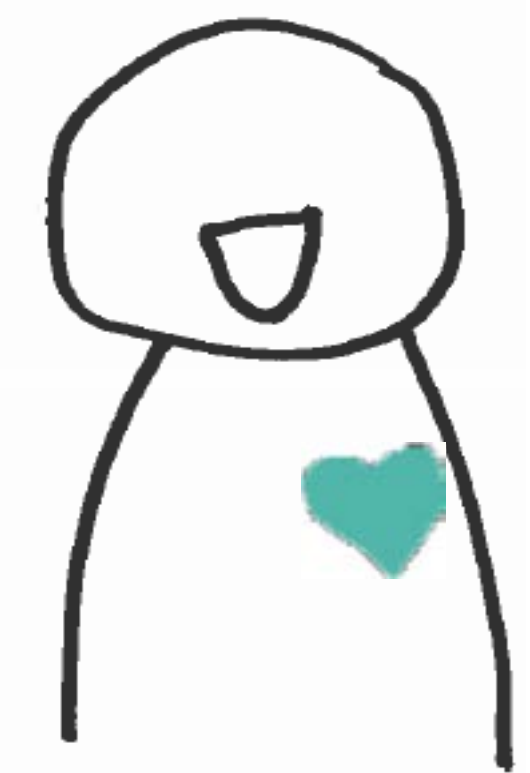
Frida confidently walks to a location that she knows is **private and quiet** with **good cell service**.



At the location, Frida takes the call **comfortably**, knowing she is giving the survivor her **full attention**.



During the call, **Sound Check** notifies Frida when there are **unforeseen distractions approaching**.



When the call ends, Frida continues with her day, satisfied that she has been an **effective advocate**.

FINDING PEACE IN PUBLIC